

# Welcome to New Horizons Children's Academy

Every young person in our community deserves to have the best opportunities at life regardless of their individual circumstances.

Education is the key to accessing these opportunities and we support and develop every member of our community to:

- Think about their Thinking
- Be their Best self
- Shape their Success

In this way Thinking Schools Academy Trust transforms life chances.



TRANSFORMING LIFE CHANCES

# Welcome Year 3 cohort of 2025-2026

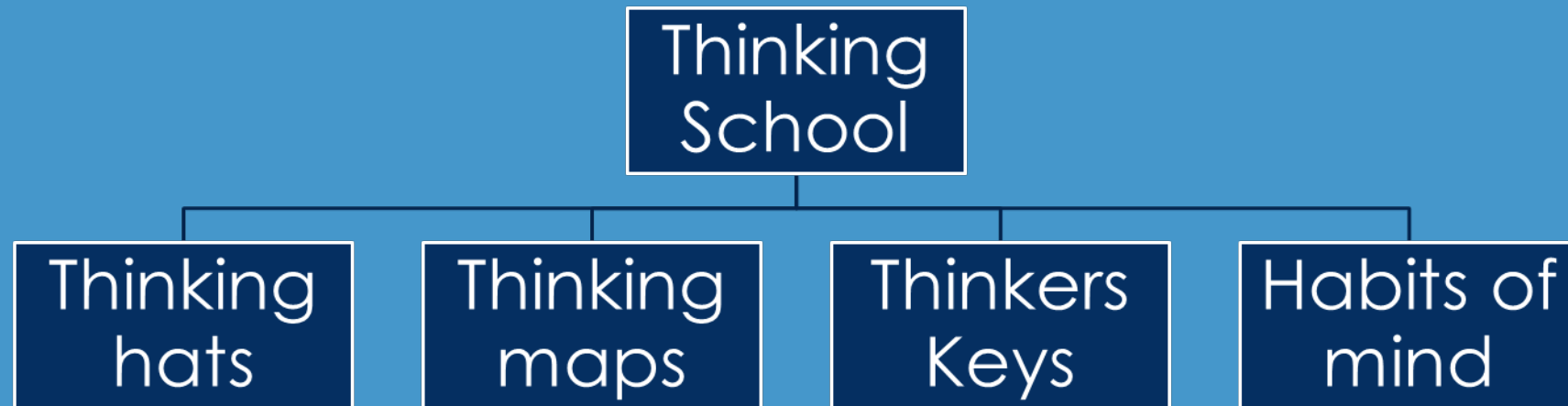
“Welcome to the start of your child’s learning journey with us”



TRANSFORMING LIFE CHANCES

# We are a Thinking School

An educational community in which all members share a common commitment to giving regular careful thought to everything that takes place. This involves both students and staff learning how to think reflectively, critically and creatively, and employing these skills and techniques in the co-construction of a meaningful curriculum and associated activities. Successful outcomes are reflected in students across a wide range of abilities, demonstrating independent and co-operative learning skills, high levels of achievement and both enjoyment and satisfaction in learning. Benefits will be shown in ways in which all members of the community interact with and show consideration for each other and in the positive psychological well-being of both students and staff.



TRANSFORMING LIFE CHANCES

# Introduction to the Senior Leadership Team

---

Mrs Jones  
Headteacher

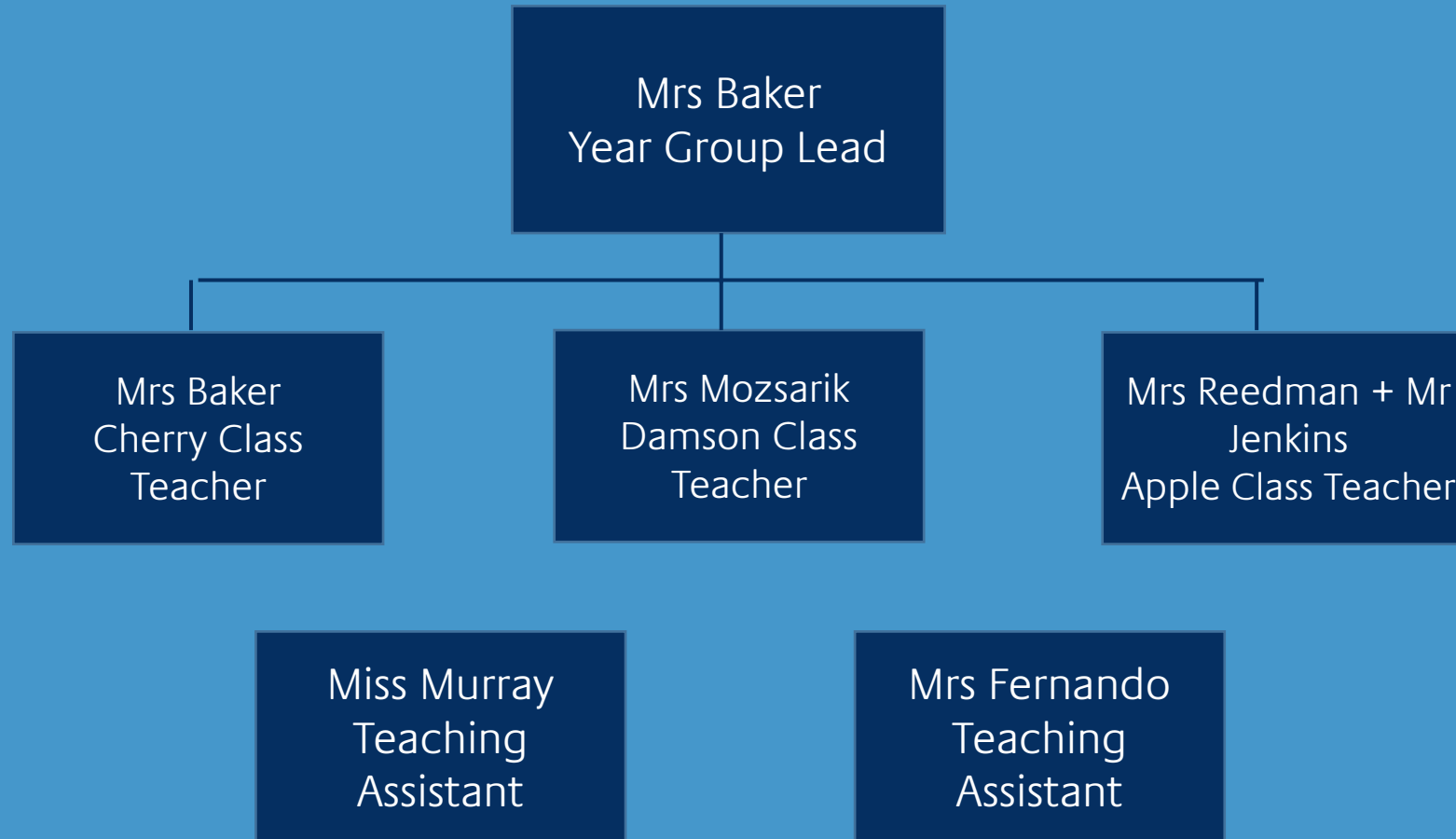
Mrs Bacon  
Deputy Headteacher

Mr Lewis  
Assistant Headteacher

Miss Xavier-Cope  
Assistant Headteacher

Miss Hales  
Assistant Headteacher

# Introduction to the Year 3 Class Teachers



# Transition Programme

---

Wednesday 2<sup>nd</sup> July: Current teachers will have hand over meetings with new teachers for academic year 2025-2026.

Thursday 3<sup>rd</sup> July: Children will spend the day in their new classroom with their new teacher and teaching assistant.

Thursday 3<sup>rd</sup> July: Children will bring home a 'Meet the teacher' document to share with you at home.

# Arrangements for September 2025

---

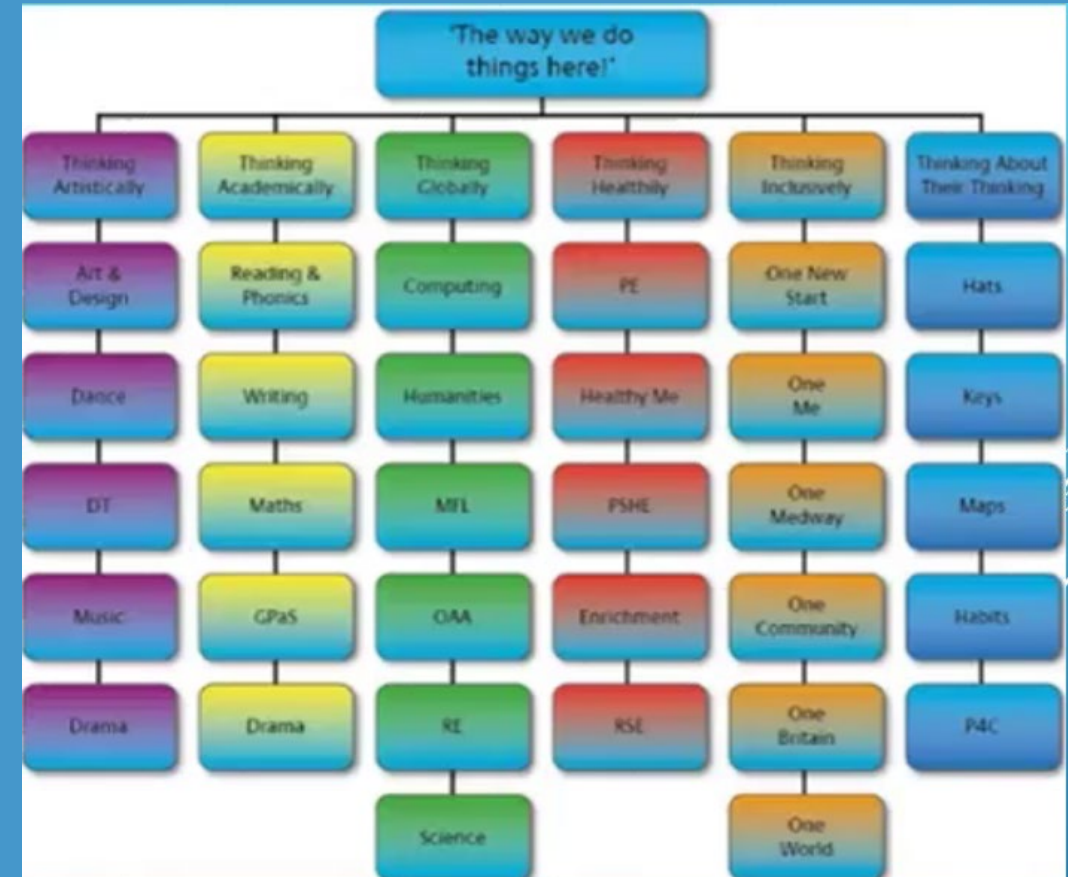
Monday 1<sup>st</sup> September and Tuesday 2<sup>nd</sup> September 2025 is a whole school staff development days. The school will be closed to all children.

Wednesday 3<sup>rd</sup> September 2025: All KS1 and KS2 children will start school full time.

# National Curriculum

The National Curriculum subjects at primary school are:

- English
- Maths
- Science
- Design and technology
- History
- Geography
- Art and Design
- Music
- Physical education (PE)
- Computing
- Religious Education (RE)
- MFL (French)



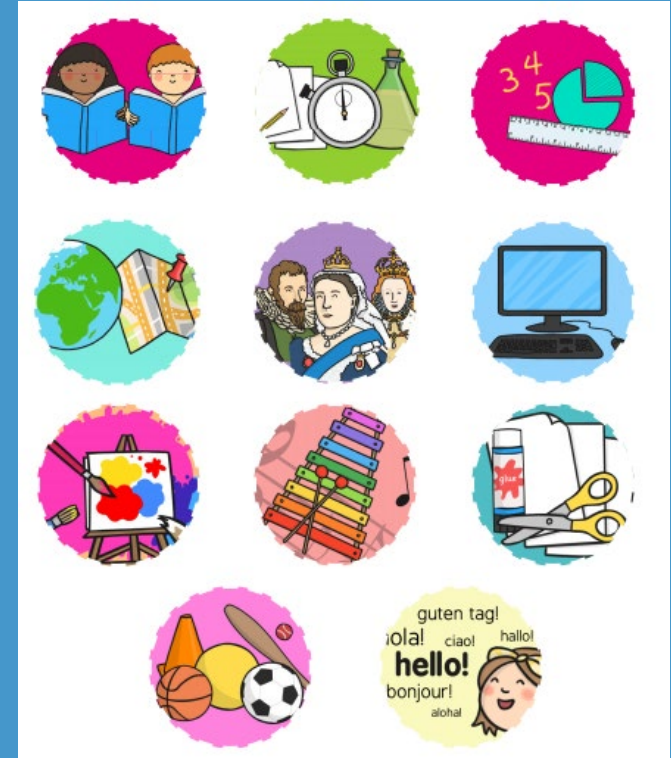
TRANSFORMING LIFE CHANCES



# Introduction to the Year 3 National Curriculum

Transition period over Term 1 will take place to support the following:

- Greater independence with tasks
- More opportunities to evaluate and reflect on their learning
- Slightly longer school day (3:15 finish)
- Opportunity to learn French.



# A Day in Year 3

In a typical day, your child will take part in the following activities;

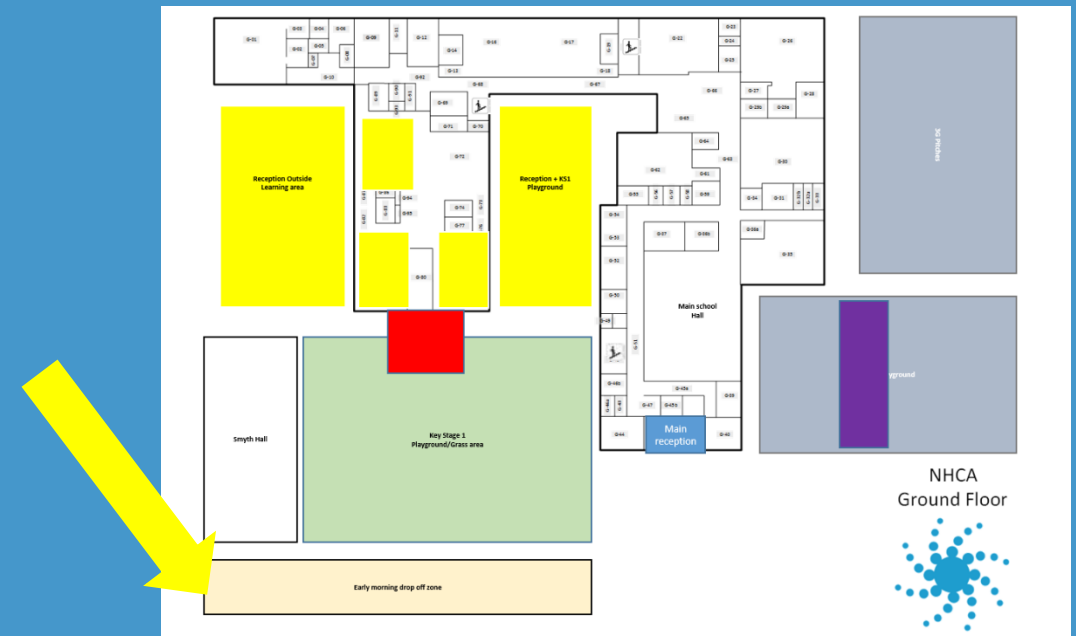
- Registration
- Assembly
- Reading lesson
- Writing lesson
- Arithmetic lesson
- Maths lesson
- Break time and lunch time
- Lessons in at least two of the following subjects; Art, Computing, Dance, Outdoor Adventurous Activities (OAA), Geography, History, Music, PE PSHE, RE, Science and MFL (French)
- Thinking Reflection Time

TRANSFORMING LIFE CHANCES

# Drop-Off

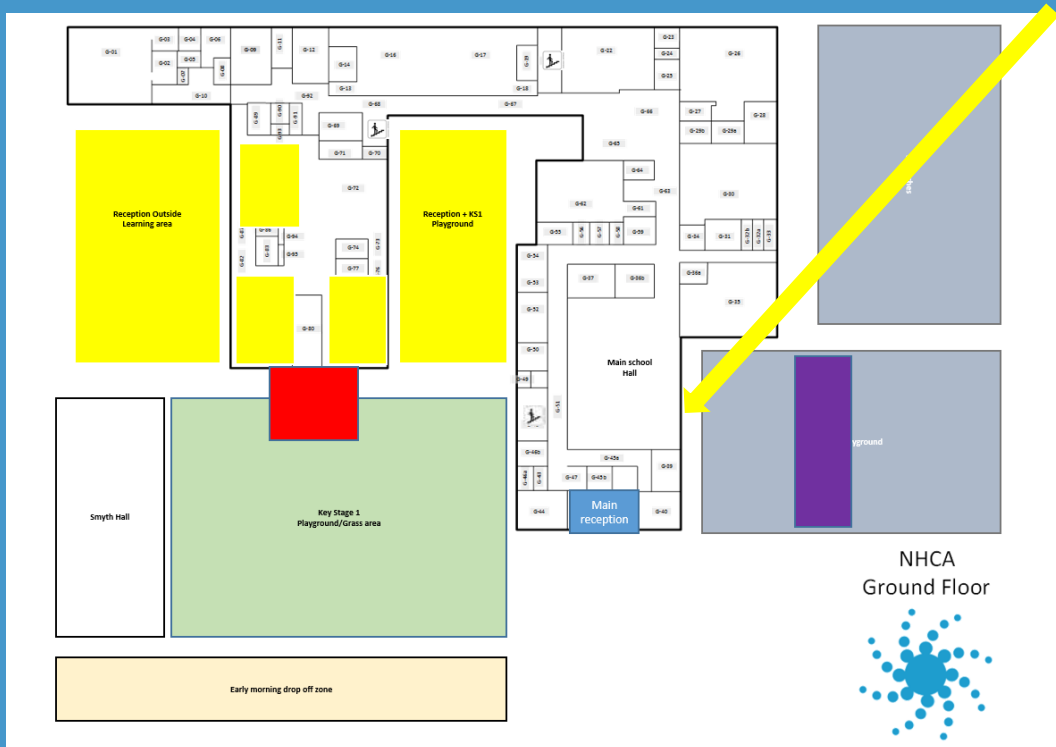
## Drop Off: 8.20-8.40am

The school operates a 'drop off zone' from 8.20 until 8.40 daily. Cars enter the school via Walderslade Road; children exit the car on the left hand side to be greeted by a member of the school team. The child will then safely walk through the school grass area to be supervised in the playground by an adult. Once the child has disembarked from the car the parent/carer carefully drives off and exits the site through Park Crescent, parents and carers are asked to turn left to reduce traffic congestion and enable a smooth flow of traffic.



# Year 3 Morning Routine

## Drop Off: 8.30-8.40am



Year three children will need to be taken to the hall doors just off the playground where members of staff are there to meet them. The children walk through the door and to their classrooms. Throughout the building various adults are stationed to direct children to their classrooms and to support them to be ready for the start of the school day.

If your child arrives late (after 8:40) you will need to take them to the school office where you will be required to sign them in late, using our electronic signing in system, and provide a valid reason.

## Collection: 3:15pm

- Year three parents are to wait on the far side of the playground. The children will come out a class at a time and line up with their teacher and member of support staff. The staff will let the children go when they see you are there to collect them.
- If somebody different is collecting your child from school, please write email or call the school office.
- Members of the Senior Leadership Team (SLT) are always available at the doors in the morning and on the playground at the end of every day to help assist with the smooth start and end of the school day. They wear dark blue Hi-Vis tabards so you can spot them easily.

# Snack Time

Year Three children are no longer entitled to free milk and fruit daily.  
Your child will be able to bring a healthy snack with them, from home, to eat on the playground.



# Lunchtime (12.10-1.00pm)

The lunch menu is on a three week rota and is available on the school website:

[https://www.newhorizonschildrensacademy.org.uk/site-newhorizons/assets/files/3537/innovate\\_sept\\_25\\_primary\\_menu.pdf](https://www.newhorizonschildrensacademy.org.uk/site-newhorizons/assets/files/3537/innovate_sept_25_primary_menu.pdf)

Innovate, our catering company, make all meals from scratch in our kitchen daily.

*If you would like your child to be packed lunch, please send them in with a packed lunch box. Packed lunches should be healthy and balanced with no more than one small piece of chocolate or cake. No fizzy drinks or sweets.*

MENU WEEK 1						SERVED W/C: 15 <sup>th</sup> Sept   6 <sup>th</sup> Oct		Innovate IFG	
	Classic main meal	Classic HALAL main meal	VEGETARIAN MAIN MEAL	Sides	FILLED ROLLS	SWEET TREATS			
MONDAY	Creamy Tomato Pasta	Creamy Tomato Pasta	Cheese & Tomato Pizza, with Wedges	Garden Peas	Tuna Mayonnaise Roll Cheese Roll	Strawberry Mousse			
TUESDAY	Classic Beef Lasagne	Halal Classic Beef Lasagne	Vegetarian Lasagne	Italian Vegetables	Halal Chicken Roll Egg Mayonnaise Roll	Original Flapjack			
WEDNESDAY	Roast Gammon & Gravy	Halal Roast Chicken & Gravy	Baked Mac n Cheese	Seasonal Vegetables (Carrots, Broccoli & Courgette)	Halal Chicken Roll Cheese Roll	Raspberry Jelly & Mandarins			
THURSDAY	Spanish Chicken & Tomato Rice	Halal Spanish Chicken & Tomato Rice	Chickpea, Squash & Rice Tagine	Tomato, Pepper & Carrot Salad	Tuna Mayonnaise Roll Cheese Roll	Apple & Chocolate Sponge with Custard			
FRIDAY	Fish Fingers & Chips	Fish Fingers & Chips	Vegan Vegetable Nuggets & Chips	Baked Beans	Tuna Mayonnaise Roll Egg Mayonnaise Roll	Vegan Lemon Shortbread			
AVAILABLE DAILY									
						SALAD AND HOMEMADE BREAD served with all main meals	BAKED POTATO topped with Cheese, Tuna Mayo or Baked Beans	FRESHLY COOKED PASTA	A CHOICE OF JELLY, FRUIT OR YOGHURT

TRANSFORMING LIFE CHANCES

# Behaviour Expectations

## New Horizons Rules

We work hard and allow others to do so.



We follow instructions straight away.



We respect people and property.



We have kind hands and feet.



We keep ourselves and others safe.





# How do we support your child?

---

- Quality first teaching
- Bespoke interventions for children who need to be supported and extended
- Promoting a culture of hard work, perseverance and ensuring that our learners are confident with a positive growth mind-set
- Regular and extended parent meetings from Term 2 with teachers to share test results, resources to help at home and support you in supporting your child in preparation for secondary school
- Celebrating your child's successes

# How best to support your child:

---

- Weekly homework completed and returned on the correct date
- Attending all parent teacher meeting sessions
- Reading at home every night
- Using the resources teachers share during parent meetings to help support your child
- Speaking with teachers if you want any extra resources or support-we are here to support!
- Supporting and praising all your child's achievements- we are always so proud of how our children persevere in their learning

## Breakfast Club

We have a Breakfast Club that runs every school morning from 7.30am to 8.30am. Your child will enjoy a healthy breakfast, followed by games and activities before it's time to start school. The cost of breakfast club is £2.50 per day which includes breakfast provided by Chartwells, this must be paid via PlusPay. You do not need to book in advance but if you intend to regularly use this service, please let us know via Reception so that we can ensure enough food is ordered for the kitchen.

## After School Club

Stay & Play are an external organisation that provide after school care in the local area. They offer after school care at New Horizons from 3pm-6pm. This after school care is run in addition to the school clubs that New Horizons provide. Leaflets outlining the service Stay & Play offer, including charges, can be collected from the New Horizons reception or more information is available on their website or from their Facebook page.

# Uniform

- Navy blue jumper or cardigan\*
- Tie\*
- White blouse or shirt
- Grey trousers, pleated skirt or tailored shorts
- Grey pinafore
- Navy striped or gingham summer dress
- Grey tights
- White, black or grey socks
- Proper school shoes, black, flat and hardwearing
- Book bag

(\*with school logo)

PLEASE LABEL ALL ITEMS INCLUDING SHOES



TRANSFORMING LIFE CHANCES

- White P.E. top\*
- Black shorts
- Plimsolls

(\*with the school logo)

PLEASE LABEL ALL ITEMS INCLUDING SHOES

