

Welcome to New Horizons Children's Academy

Every young person in our community deserves to have the best opportunities at life regardless of their individual circumstances.

Education is the key to accessing these opportunities and we support and develop every member of our community to:

- Think about their Thinking
- Be their Best self
- Shape their Success

In this way Thinking Schools Academy Trust transforms life chances.



TRANSFORMING LIFE CHANCES

Welcome Year 1 cohort of 2025-2026

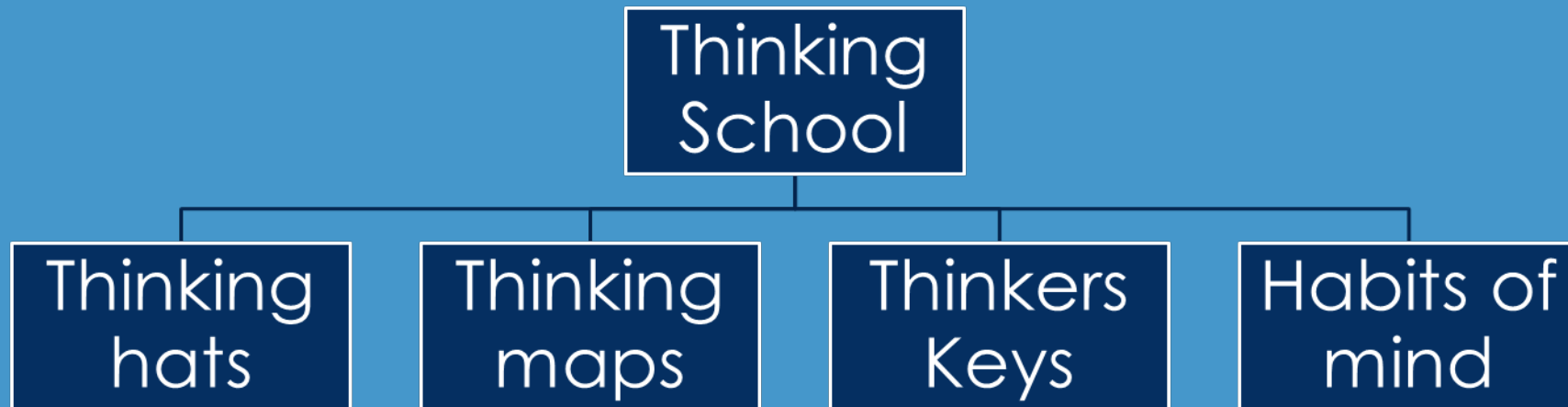
“Welcome to the start of your child’s learning journey with us”



TRANSFORMING LIFE CHANCES

We are a Thinking School

An educational community in which all members share a common commitment to giving regular careful thought to everything that takes place. This involves both students and staff learning how to think reflectively, critically and creatively, and employing these skills and techniques in the co-construction of a meaningful curriculum and associated activities. Successful outcomes are reflected in students across a wide range of abilities, demonstrating independent and co-operative learning skills, high levels of achievement and both enjoyment and satisfaction in learning. Benefits will be shown in ways in which all members of the community interact with and show consideration for each other and in the positive psychological well-being of both students and staff.



TRANSFORMING LIFE CHANCES

Introduction to the Senior Leadership Team

Mrs Bacon
Deputy Headteacher

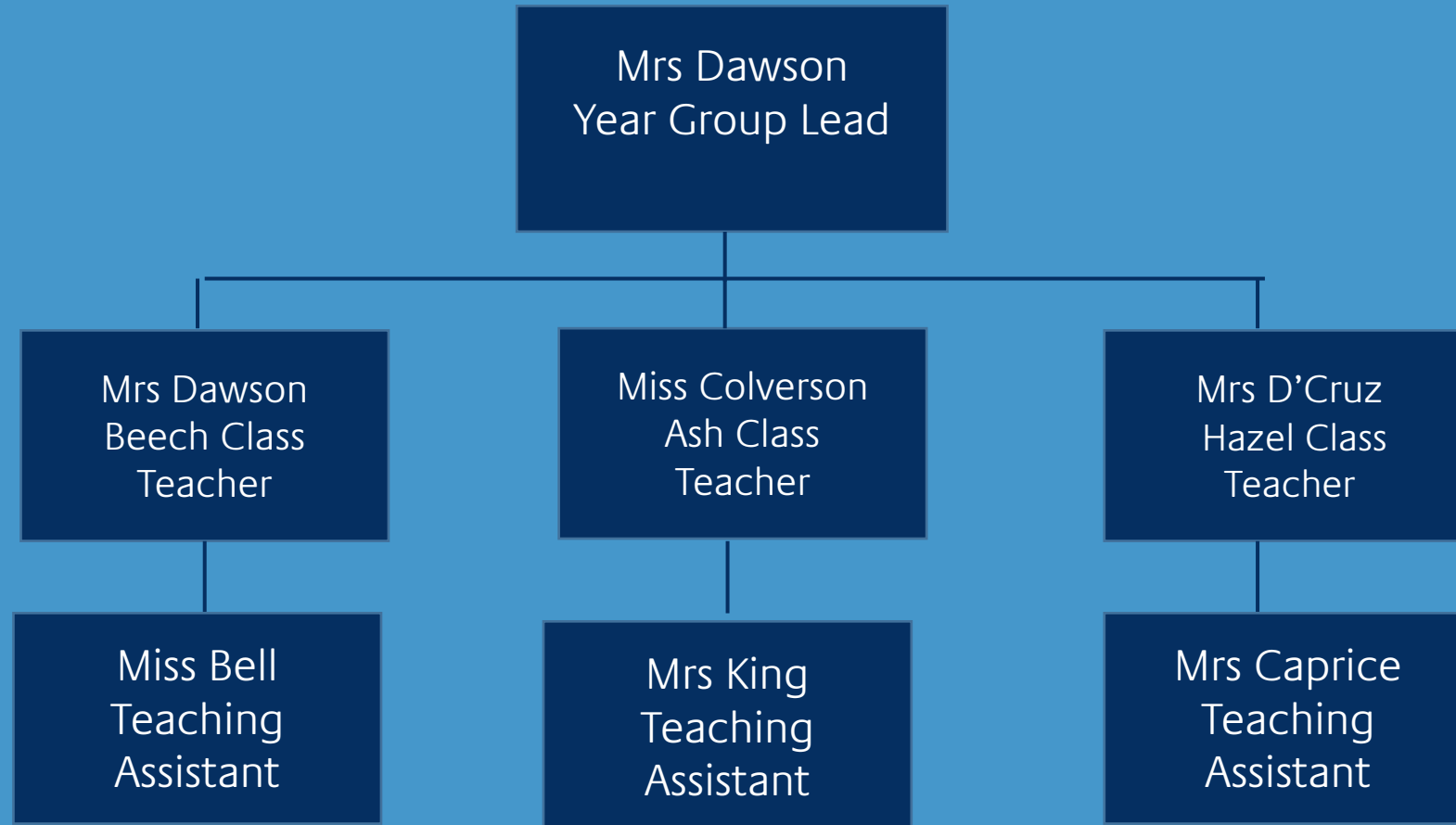
Miss Hales
Assistant Headteacher

Mr Lewis
Assistant Headteacher

Miss Xavier-Cope
Assistant Headteacher

TRANSFORMING LIFE CHANCES

Introduction to the Year 1 Class Teachers



Transition Programme

Wednesday 2nd July: Current teachers will have hand over meetings with new teachers for academic year 2025-2026.

Thursday 3rd July: Children will spend the day in their new classroom with their new teacher and teaching assistant.

Thursday 3rd July: Children will bring home a 'Meet the teacher' document to share with you at home.

Friday 4th July: Transition PowerPoint sent to parents introducing new year group team.

Arrangements for September 2025

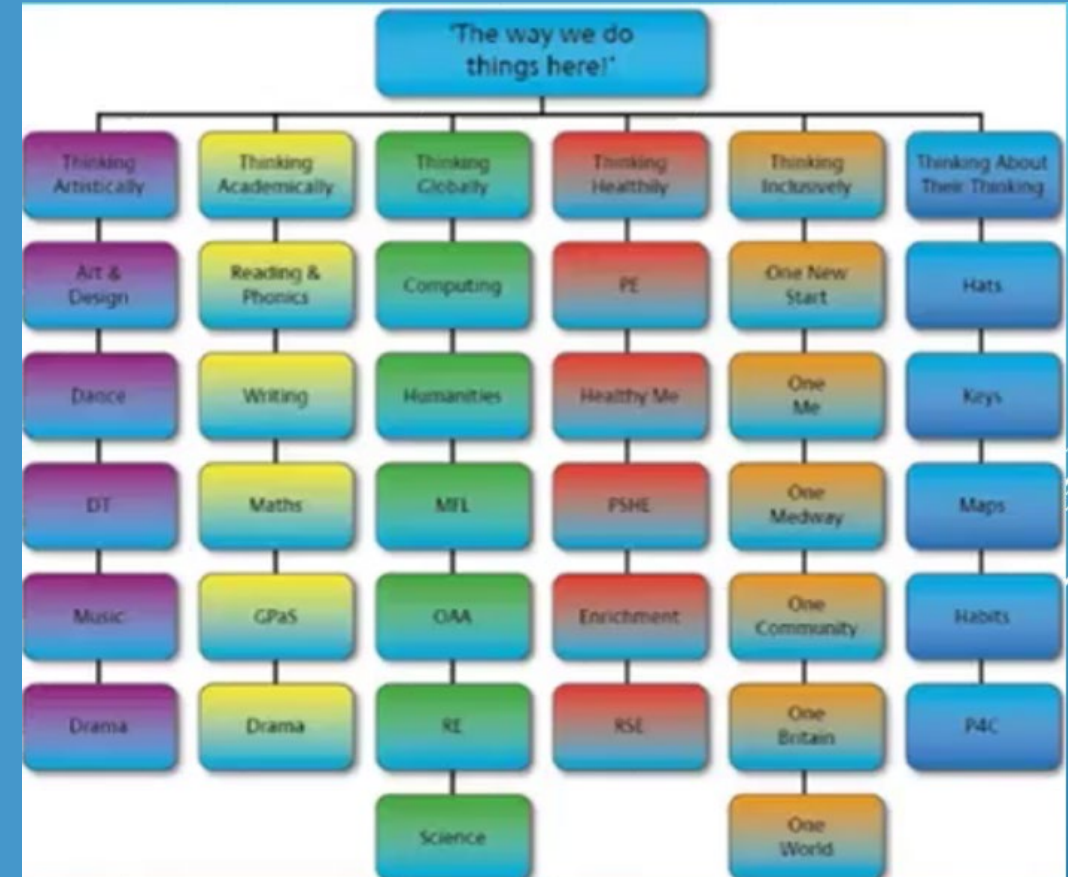
Monday 1st and Tuesday 2nd September 2025 are whole school staff development days. The school will be closed to all children.

Wednesday 3rd September 2025: All KS1 and KS2 children will start school full time.

National Curriculum

The National Curriculum subjects at primary school are:

- English
- Maths
- Science
- Design and technology
- History
- Geography
- Art and Design
- Music
- Physical education (PE)
- Computing
- Religious Education (RE)
- PSHE



TRANSFORMING LIFE CHANCES

Introduction to the Year 1 National Curriculum

Transition period over Term 1 will take place to support the following:

More formal curriculum compared with a play based curriculum.

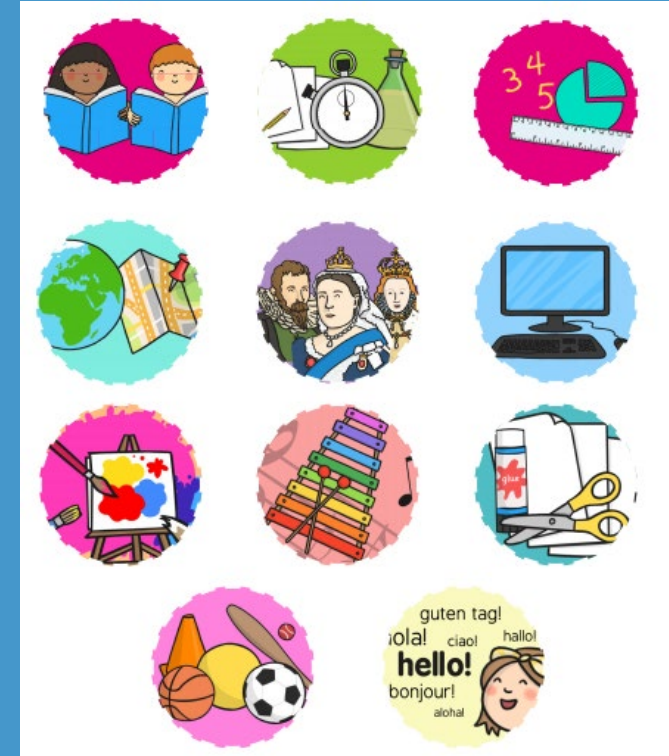
Day is more structured with a separation between play and learning.

Planning each term is based upon children's needs and interests.

Learning is split into specific subjects.

Children are expected to sit for longer periods of time.

Children are expected to write in books.



TRANSFORMING LIFE CHANCES

A Day in Year 1

In a typical day, your child will take part in the following activities;

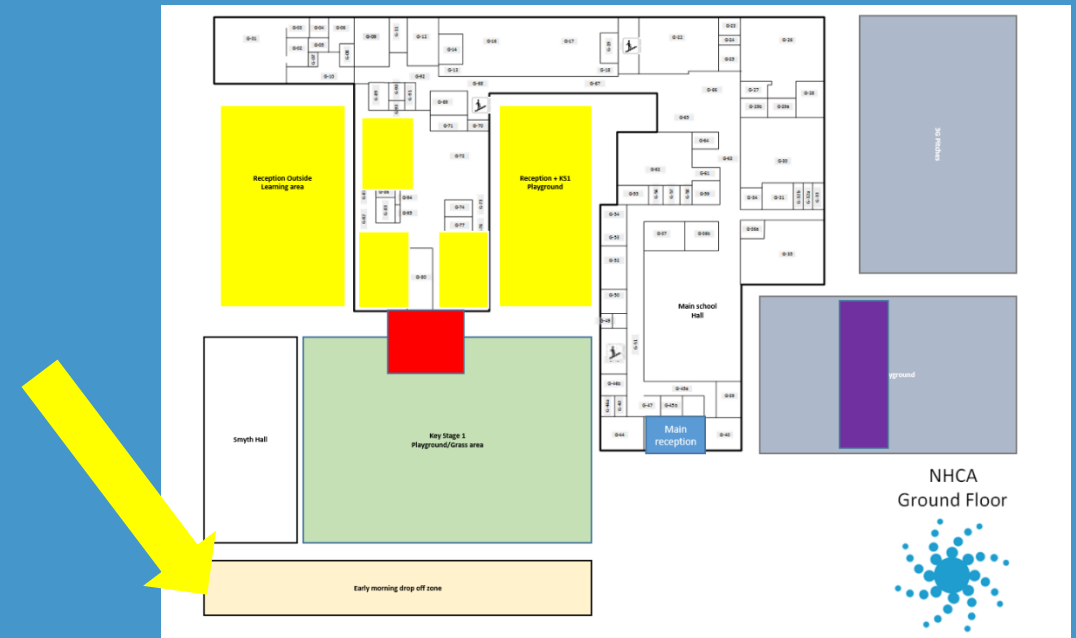
- Registration
- Phonics lesson
- Writing lesson
- Reading lesson
- Maths lesson
- Break time and lunch time
- Use of the Year 1 Outdoor Area
- Lessons in at least two of the following subjects; Art, Computing, Dance, Forest School, Geography, History, Music, PE PSHE, RE, Science
- Story time and/or 1:1 Reading Time

TRANSFORMING LIFE CHANCES

Drop-Off

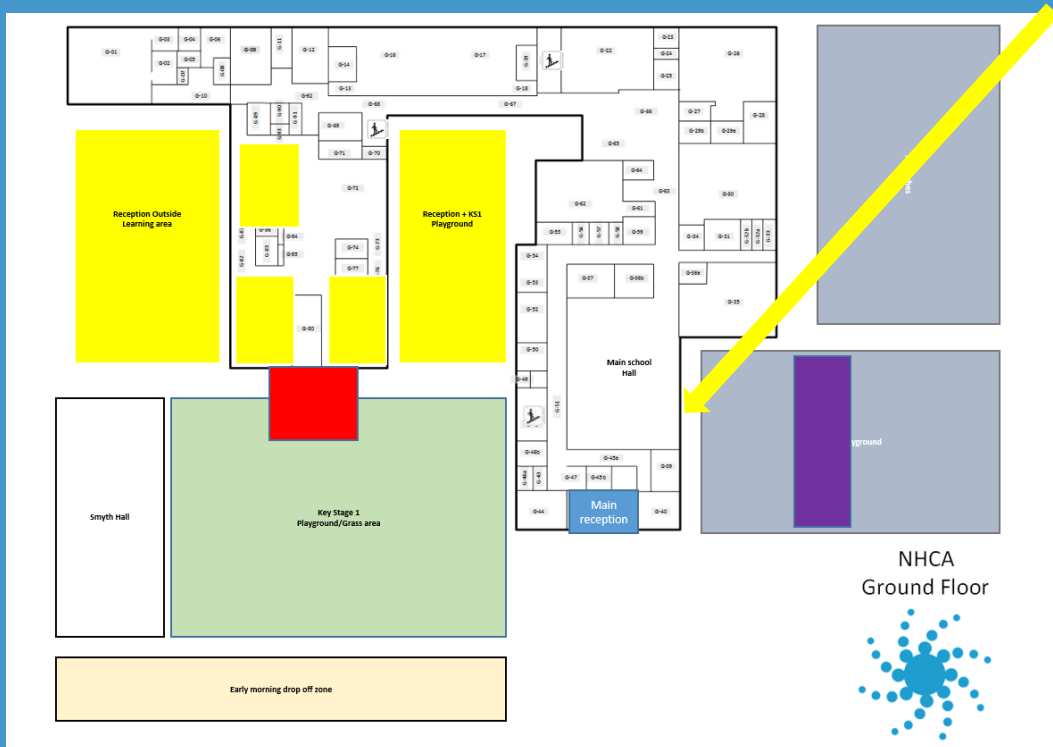
Drop Off: 8.20-8.40am

The school operates a 'drop off zone' from 8.20 until 8.40 daily. Cars enter the school via Walderslade Road; children exit the car on the left hand side to be greeted by a member of the school team. The child will then safely walk through the school grass area to be supervised in the playground by an adult. Once the child has disembarked from the car the parent/carer carefully drives off and exits the site through Park Crescent, parents and carers are asked to turn left to reduce traffic congestion and enable a smooth flow of traffic.



Year 1 Morning Routine

Drop Off: 8.30-8.35am



Year One children will need to be taken to the hall doors just off the playground where members of staff are there to meet them. The children walk through the door and to their classrooms. Throughout the building various adults are stationed to direct children to their classrooms and to support them to be ready for the start of the school day.

If your child arrives late (after 8:40) you will need to take them to the school office where you will be required to sign them in late, using our electronic signing in system, and provide a valid reason.

Collection: 3.05pm

Hazel and Beech Class: parents are to wait on the far side of the KS2 playground.

Ash Class: parents are to wait on the KS1 playground. Children will be dismissed from the fence.

The children will come out a class at a time and line up with their teacher and member of support staff. The staff will let the children go when they see you are there to collect them.

- If somebody different is collecting your child from school, please write a message to the class teacher on Seesaw or ring the school office.
- Members of the Senior Leadership Team (SLT) are always available at the doors in the morning and on the playground at the end of every day to help assist with the smooth start and end of the school day. They wear dark blue Hi-Vis tabards so you can spot them easily.

Phonics: Little Wandle

Grow the code grapheme chart										Phase 2, 3 and 5				
s s ss c se ce st sc	l t tt	p p pp	n n nn kn gn	m m mm mb	d d dd	g g gg	c c ck cc ch	r r rr wr	h h hh	b b bb	f f ff ph	t t tt le al	j j jj dge ge	v v vv ve
w wh	x	y	z z zz s se ze	qu	ch tch ture	sh ch ti ssi ci	th	ng	nk	a a	e e ea	i i y	o o a	u u o-e ou
ai ay a a-e eigh aigh ey ea	ee ea e e-e y ey	igh ie i i-e y	oa o o-e ou oe ow	oo ue u-e ew ou ui	yoo ue u u-e ew	oo u oul	ar a al	or aw au our oor al a oar ore	ur er ir or	ow ou	oi oy	ear ere eer	air are ere ear	zh su si

Snack Time

All Year 1 children are entitled to free fruit daily. This will be provided by the school.



TRANSFORMING LIFE CHANCES

Lunchtime (12.00-12.55pm)

All KS1 children are entitled to a free hot lunch on a daily basis. The lunch menu is on a three week rota and is available on the school website.

If you would like your child to be packed lunch, please send them in with a packed lunch box. Packed lunches should be healthy and balanced with no more than one small piece of chocolate or cake. No fizzy drinks or sweets.

[illegible]

Behaviour Expectations

At New Horizons all children are expected to follow our school rules. There is a picture of the school rules on the slide to remind you of these.

We use a behaviour chart. You will start the day on the star and get moved up to the sun and rainbow for following these rules.

We also use our habits of mind to show a good behaviour for learning. For example, you might need to remember to manage your impulsivity sometimes and we often show persistence in our learning.



Breakfast Club

We have a Breakfast Club that runs every school morning from 7.30am to 8.30am. Your child will enjoy a healthy breakfast, followed by games and activities before it's time to start school. The cost of breakfast club is £024.50 per day which includes breakfast provided by Chartwells, this must be paid via PlusPay. You do not need to book in advance but if you intend to regularly use this service, please let us know via Reception so that we can ensure enough food is ordered for the kitchen.

After School Club

Stay & Play are an external organisation that provide after school care in the local area. They offer after school care at New Horizons from 3pm-6pm. This after school care is run in addition to the school clubs that New Horizons provide. Leaflets outlining the service Stay & Play offer, including charges, can be collected from the New Horizons reception or more information is available on their website or from their Facebook page.

How do we support your child?

- Quality first teaching
- Bespoke interventions for children who need to be supported and extended
- Promoting a culture of hard work, perseverance and ensuring that our learners are confident with a positive growth mind-set
- Regular and extended parent meetings from Term 2 with teachers to share test results, resources to help at home and support you in supporting your child in preparation for secondary school
- Celebrating your child's successes

How best to support your child:

- Weekly homework completed and returned on the correct date
- Attending all parent teacher meeting sessions
- Reading at home every night
- Using the resources teachers share during parent meetings to help support your child
- Speaking with teachers if you want any extra resources or support-we are here to support!
- Supporting and praising all your child's achievements- we are always so proud of how our children persevere in their learning

Uniform

- Navy blue jumper or cardigan*
- Tie*
- White blouse or shirt
- Grey trousers, pleated skirt or tailored shorts
- Grey pinafore
- Navy striped or gingham summer dress
- Grey tights
- White, black or grey socks
- Proper school shoes, black, flat and hardwearing
- Book bag

(*with school logo)

PLEASE LABEL ALL ITEMS INCLUDING SHOES



TRANSFORMING LIFE CHANCES

- White P.E. top*
- Black shorts
- Plimsolls

(*with the school logo)

PLEASE LABEL ALL ITEMS INCLUDING SHOES

